



A close-up photograph of a child's feet standing on a reflective surface. The feet are positioned centrally, with the toes pointing slightly outwards. The skin is a warm, reddish-brown tone. The background is a soft, out-of-focus white. The text is overlaid on the image, with the main title in large black font and the subtitle in smaller blue italicized font.

# Enhancing Developmentally Oriented Primary Care

*Swaying Systems  
and  
Impacting Lives*

# Disclosure Information

- I have no relevant financial relationships with the manufacturer(s) of any commercial product(s) and/or provider of commercial services discussed in this presentation.
- I do not intend to discuss commercial products or services and unapproved/investigative uses of a commercial product/device in my presentation

# EDOPC at a Glance

- Collaborative project
  - Advocate Health Care Healthy Steps Program
  - Illinois Chapter, American Academy of Pediatrics (ICAAP)
  - Illinois Academy of Family Physicians (IAFP)
- 2005 through 2010
- Multiple funders

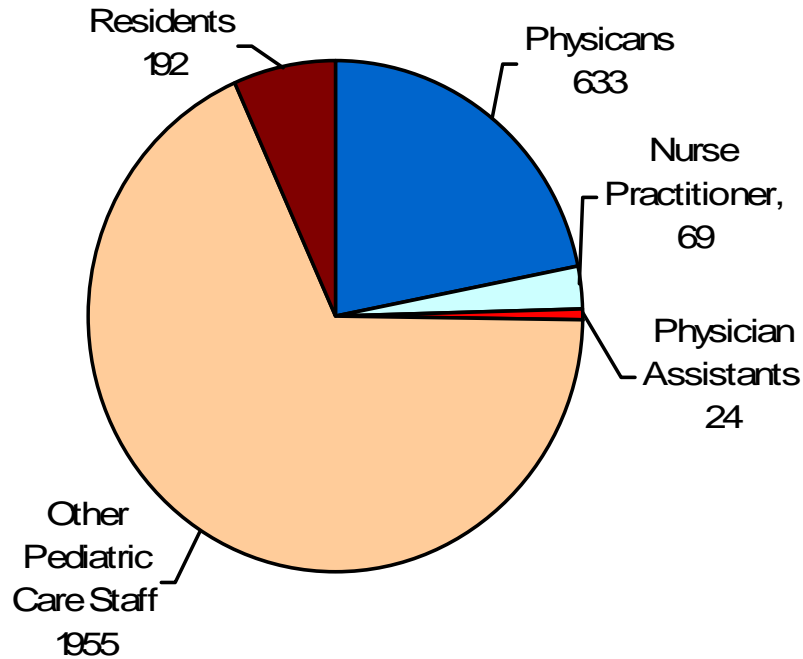
# EDOPC at a Glance

## Goals

- Improve delivery and financing of preventive health and developmental services for children birth to three
- Build on existing programs to develop a range of strategies for primary care settings

# EDOPC at a Glance: Who Has Been Trained

**Professionals Trained by EDOPC by Type**



**EDOPC at a Glance:  
Impact On Children In Illinois**

**45% Of All  
Children In Illinois  
Under The Age Of  
Three**

# EDOPC

## Office Based Training Programs

- Developmental Screening and Referral
- Social and Emotional Development: Screening Strategies for Primary Care Physicians
- Identifying Postpartum Depression During Well-Child Visit: Resources for Screening, Referral, and Treatment
- Early Autism Detection and Referral
- Domestic Violence Effects on Children: Detection, Screening and Referral in Primary Care

# EDOPC Office Based Training Programs: Learning Points

Participants will be able to:

- Identify the purpose of particular screening and early intervention
- Use tools to screen
- Implement referral procedures for children/families who exhibit potential concerns
- Employ parent/caregiver education materials
- Implement efficient office procedures for staff roles, coding and billing, and care coordination.

# EDOPC Objectives

- Provider Acceptance
- Knowledge Boost
- Confidence Strengthening
- Enhanced Awareness of Referral Resources
- Increase in Screening

# EDOPC Objectives

## Provider Acceptance

The site-based training and technical assistance model will be accepted throughout the state to provide a foundation for ongoing collaboration to promote optimal child development.

# EDOPC Objectives

## Knowledge Boost

EDOPC training will increase knowledge regarding key topics identified as priority areas for the developmental care of young children among providers of primary care to young children.

# Training Topics Knowledge Outcomes Comparison 2006 and 2007

Topic	Number measured	Pretest mean	Posttest mean
Autism 15 items	59	11.46	12.88
Dev Screening 3 items	265	2.05	2.21
PPD 5 items	283	5.30	5.78
Soc/Em screening 7 items	234	5.09	5.43

Topic	Number measured	Pretest mean	Posttest mean
Autism	87	3.78	4.57
Dev Screening	249	4.17	4.45
PPD 5/6 items	58/ 196	4.21/ 5.13	4.48/ 5.37
Soc/Em screening	111	4.02	4.37
Domestic Violence	263	4.11	4.32

# EDOPC Objectives

## Confidence Strengthening

EDOPC training will improve the confidence of primary care providers regarding the identification of developmental issues or delays, perinatal depression, and domestic violence.

# Confidence Strengthening

Topic	2005	2006	2007
Developmental	100%	86%	94%
Social-emotional	94%	91%	92%
PPD	84%	91%	94%

# EDOPC Objectives

## Enhanced Awareness Of Referral Resources

EDOPC training will improve primary care providers' knowledge of referral resources and procedures for developmental issues and perinatal depression.

# Provider Self-Reporting: Training Enhanced Awareness Of Referral Resources (% agreed)

Topic	2005	2006	2007
Developmental	75%	90%	95%
Social- emotional	60%	90%	92%
PPD	95%	92%	94%

# EDOPC Objectives

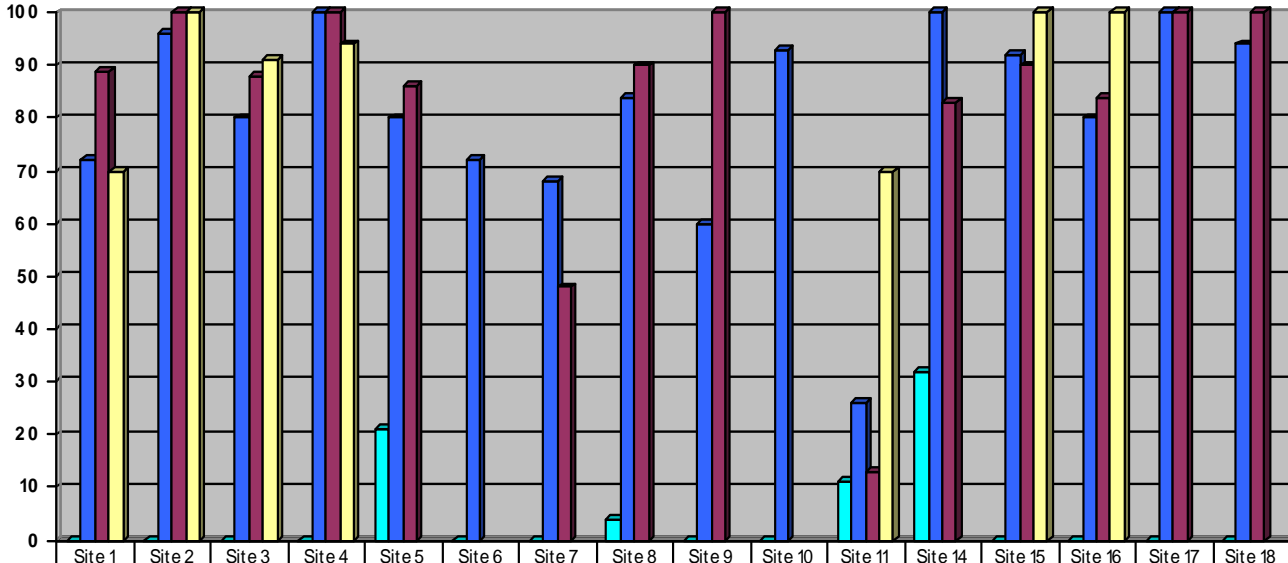
## Increase In Screening

EDOPC training and technical assistance will increase the proportion of young children screened for developmental issues and the proportion of mothers screened for perinatal depression.

# Screening Practice at Pretest and Posttest (%)

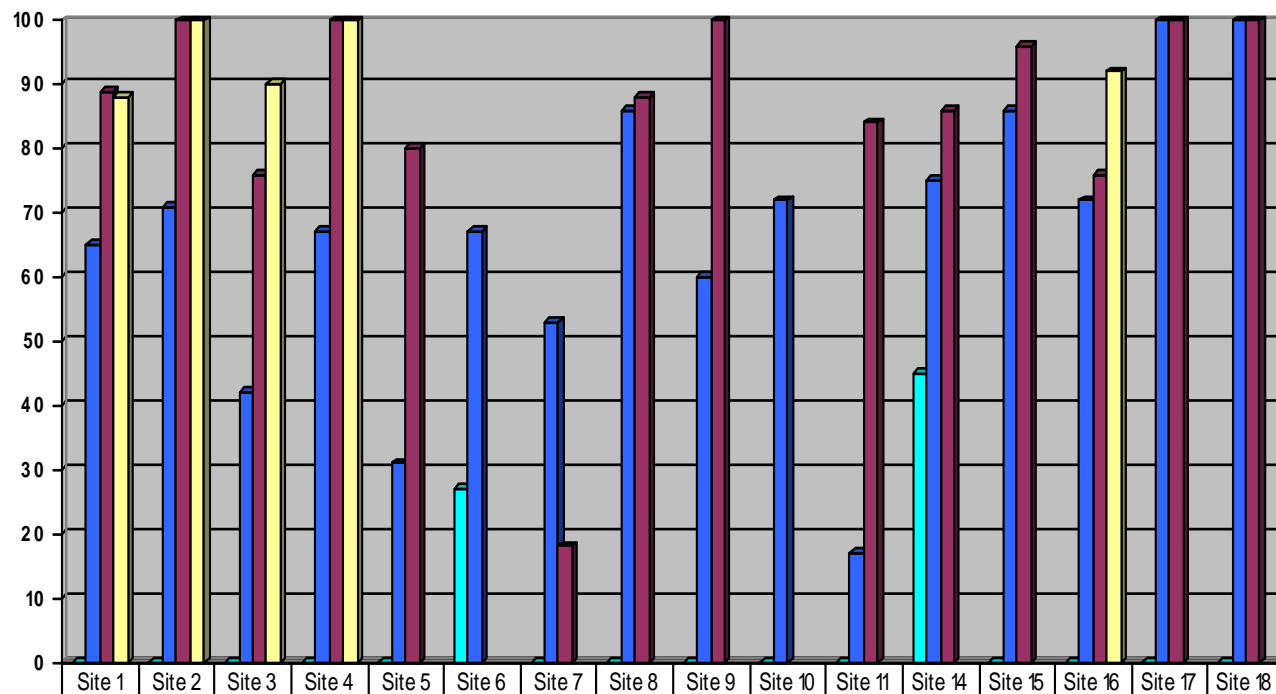
Topic	2005 Pretest	2005 Posttest	2006 Pretest	2006 Posttest	2007 Pretest	2007 Posttest
Dev Screening	50%	100%	50%	93%	41%	86%
Soc/Em Screening	33%	100%	35%	94%	47%	95%
PPD	14%	93%	58%	92%	29%	95%
Domestic Violence					18%	88%

# Percentage of developmental screenings using the Ages and Stages Questionnaire by the 1-year well-child visit, by site, 2004–2007



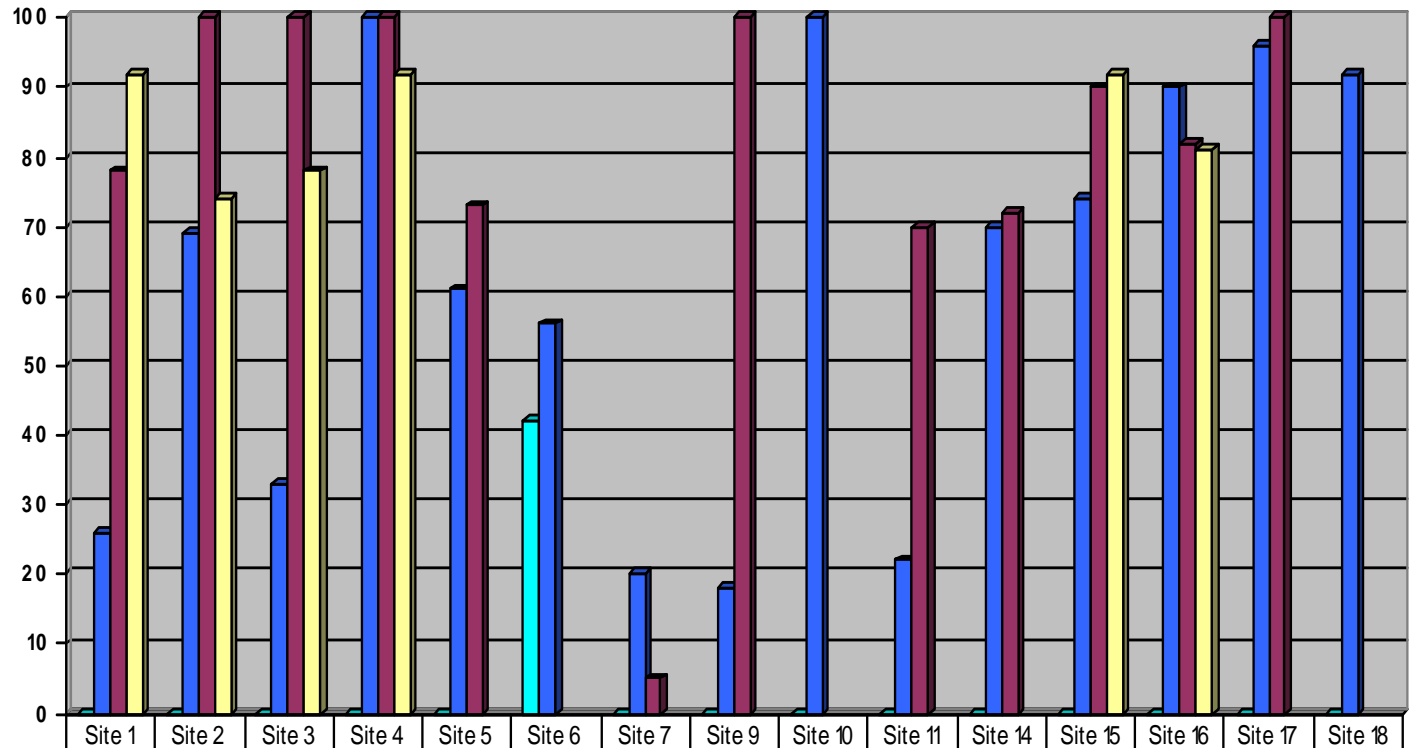
	Site 1	Site 2	Site 3	Site 4	Site 5	Site 6	Site 7	Site 8	Site 9	Site 10	Site 11	Site 14	Site 15	Site 16	Site 17	Site 18
■ Baseline	0	0	0	0	21	0	0	4	0	0	11	32	0	0	0	0
■ First Post training Audit	72	96	80	100	80	72	68	84	60	93	26	100	92	80	100	94
■ Second Post training Audit	89	100	88	100	86	--	48	90	100	--	13	83	90	84	100	100
■ Third Post training Audit	70	100	91	94	--	--	--	--	--	--	70	--	100	100	--	--

# Percentage of developmental screenings using the Ages and Stages Questionnaire by the 2-year well-child visit, by site, 2004–2007



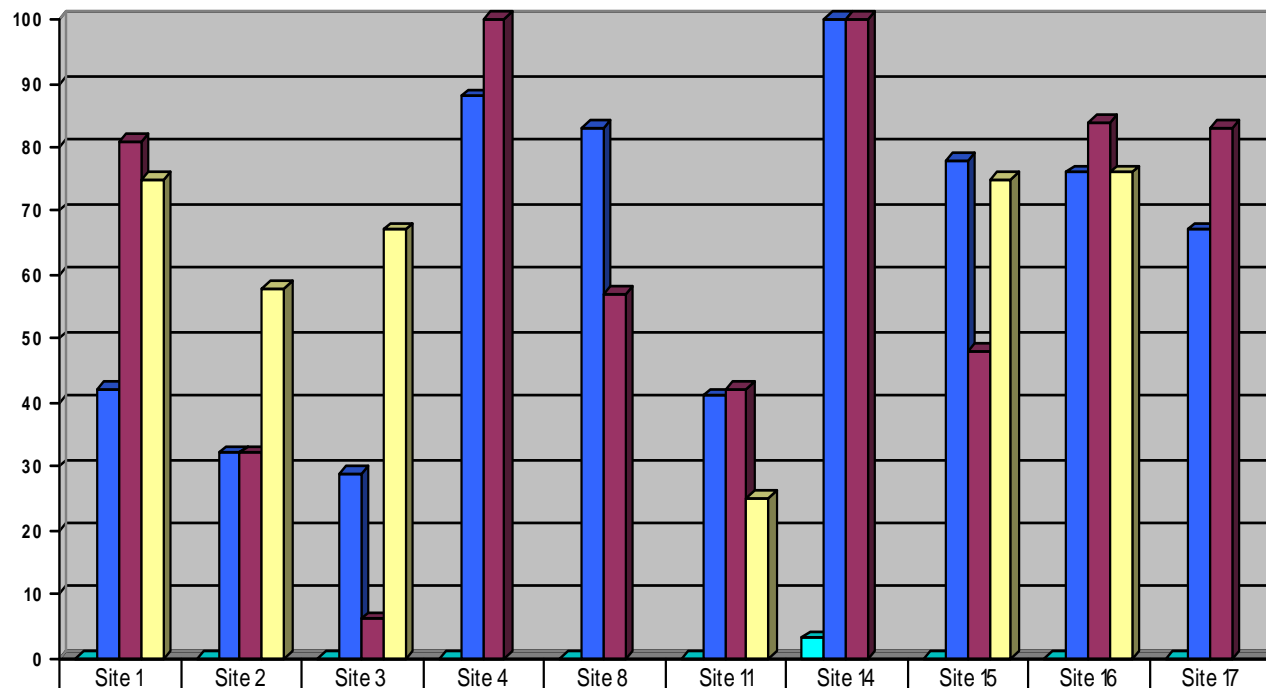
	Site 1	Site 2	Site 3	Site 4	Site 5	Site 6	Site 7	Site 8	Site 9	Site 10	Site 11	Site 14	Site 15	Site 16	Site 17	Site 18
■ Baseline	0	0	0	0	0	27	0	0	0	0	0	45	0	0	0	0
■ First Post training Audit	65	71	42	67	31	67	53	86	60	72	17	75	86	72	100	100
■ Second Post training Audit	89	100	76	100	80	--	18	88	100	--	84	86	96	76	100	100
■ Third Post training Audit	88	100	90	100	--	--	--	--	--	--	--	--	--	92	--	--

# Percentage of social/emotional screenings using the Ages and Stages Questionnaire: Social/Emotional within 2-year well-child visits, 2004–2007



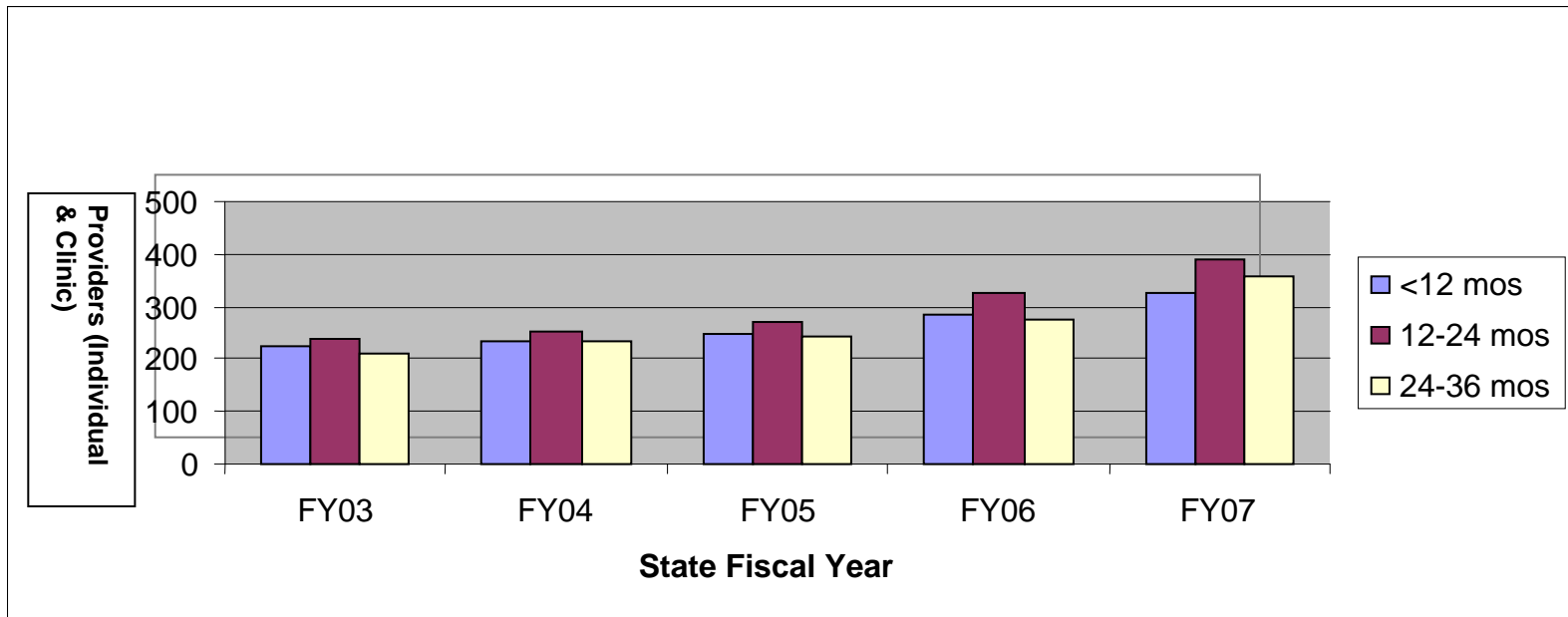
	Site 1	Site 2	Site 3	Site 4	Site 5	Site 6	Site 7	Site 9	Site 10	Site 11	Site 14	Site 15	Site 16	Site 17	Site 18
■ Baseline	0	0	0	0	0	42	0	0	0	0	0	0	0	0	0
■ First Post training Audit	26	69	33	100	61	56	20	18	100	22	70	74	90	96	92
■ Second Post training Audit	78	100	100	100	73	--	5	100	--	70	72	90	82	100	--
■ Third Post training Audit	92	74	78	92	--	--	--	--	--	--	--	92	81	--	--

# Percentage of PPD screenings using the Edinburgh Postnatal Depression Scale by the 6-month well-child visit, by site, 2004–2007

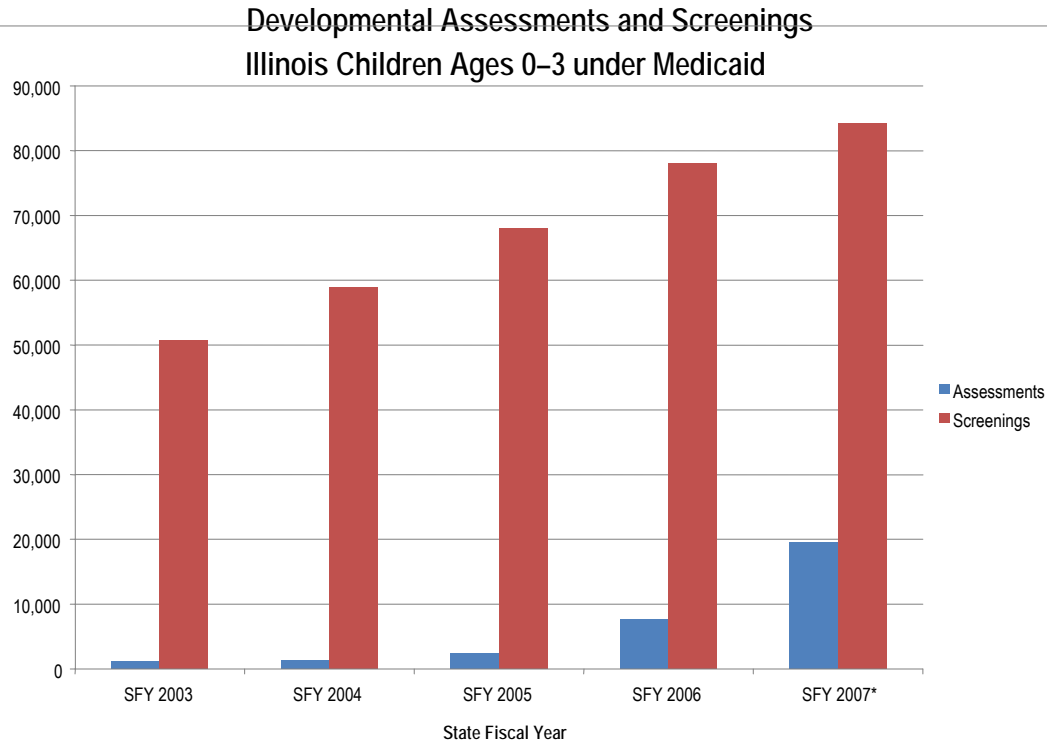


	Site 1	Site 2	Site 3	Site 4	Site 8	Site 11	Site 14	Site 15	Site 16	Site 17
■ Baseline	0	0	0	0	0	0	3	0	0	0
■ First Post training Audit	42	32	29	88	83	41	100	78	76	67
■ Second Post training Audit	81	32	6	100	57	42	100	48	84	83
■ Third Post training Audit	75	58	67	--	--	25	--	75	76	--

# Illinois Medicaid Unique Providers Billing Dev Screening(96110 FY03-07)



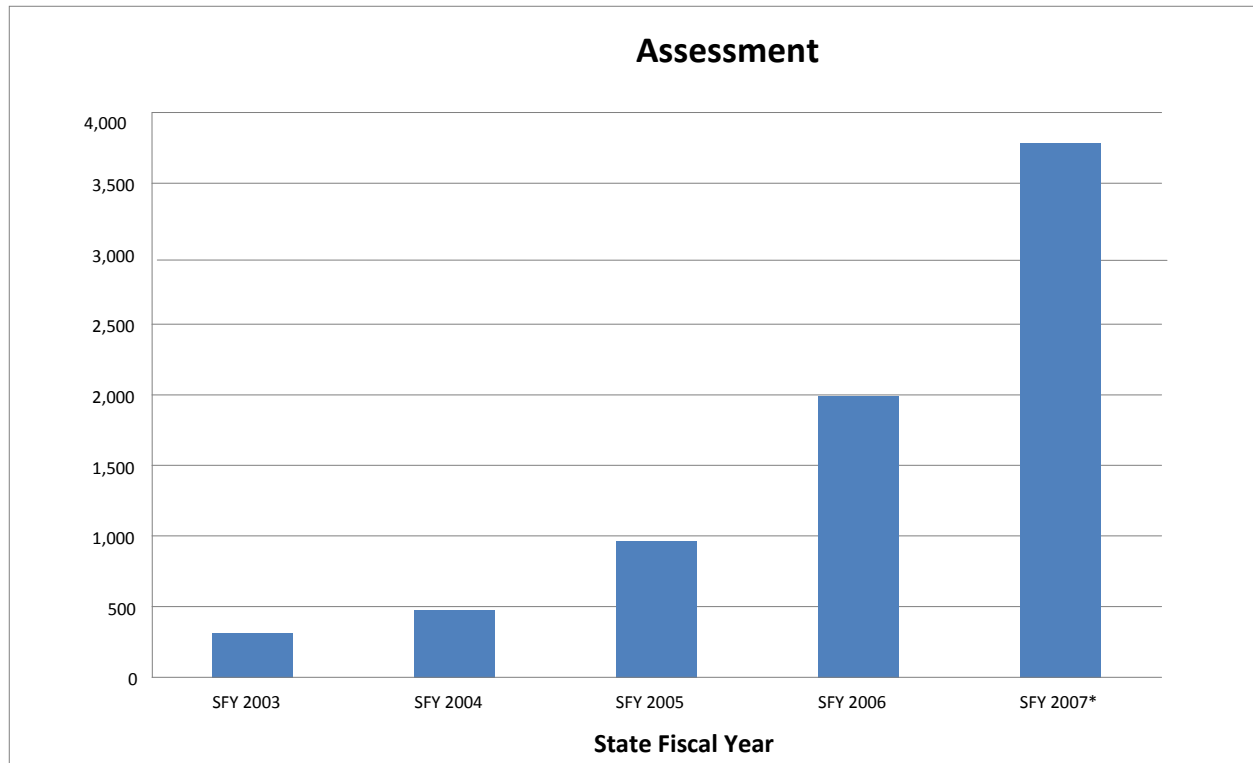
# Developmental Assessments and Screenings: Illinois Children Ages 0–3 under Medicaid



\*

provisional data for 2007. Providers currently have one year to bill HFS for services under Medicaid so final numbers may be greater than those reflected in this analysis, which was based on billings received by 9/07.

# Initial referrals to Early Intervention subsequent to 96110 encounter (Developmental Screening)/96111 encounter



\* provisional data for 2007. Providers currently have one year to bill HFS for services under Medicaid so final numbers may be greater than those reflected in this analysis, which was based on billings received by 9/07.

# EDOPC Tools

- Training
- Resource Toolkits
- Technical Assistance
- EDOPC Web site



# EDOPC

Enhancing Developmentally Oriented Primary Care



## REGISTER NOW!

Learn about validated screening programs at your own pace. [Register for online training here.](#)

## ONLINE TRAINING LOGIN

E-mail

Password

[I forgot my password](#)

[EDOPC HOME](#)

[SCREENING OVERVIEW](#)

[Why Screen?](#)

[The Benefits of Screening](#)

## Welcome to EDOPC!

Screening helps you achieve best outcomes:

- \* Identify children with delays
- \* Refer patients for services
- \* Facilitate conversations with parents
- \* Develop your business



[Register for Online Training](#)



Launch Video

## LAUNCH VIDEO

Pediatricians Mark Rosenberg and Karin Vander Ploeg Booth speak about the value of screening.

The Enhancing Developmentally Oriented Primary Care Project (EDOPC) is a resource for healthcare providers in Illinois. We work to improve the delivery and financing of preventive health and developmental services for children birth to age three.

This web site contains up-to-date information on child development and mental health issues, including screening, referral and coding/billing for screenings.

# Lessons Learned

- The Model
- Evaluations From Chart Review
- Systems Change

# The Model

- Academic Detailing
- Peer-to-Peer Faculty
- Office-based Presentations
- Technical Assistance
- EDOPC Web site

# Evaluation Through Chart Review

- 85% of patients at targeted well-child visits
- Intervention to Implementation
- Adaptation of PPD screenings

# Systems Change

- Medicaid and Private Insurers
- Workforce Development
- Early Intervention

# Medicaid and Private Insurers

- Who Pays?

- Reimbursement Rates

# Workforce Development

**Need to develop and sustain a well-trained, diverse workforce of early childhood mental health professionals throughout Illinois**

# Early Intervention (EI)

- Communications between practices and EI
- What happens after a referral is made
- Timeline for initiation of services
- Care coordination for children receiving EI services

# For More Information About EDOPC

EDOPC Information Line:

Phone: 888-270-0558 or 312-733-1026 x203 or 212

Email: [info@edopc.org](mailto:info@edopc.org)

Website: [www.edopc.org](http://www.edopc.org)

Juanona Brewster, MDiv., MTS, MJ

Director of Early Childhood Development Projects

Illinois Chapter, American Academy of Pediatrics

